

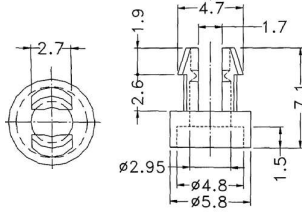
Miniature Spacer Grommet Nut

Quick, positive securing of panels and PCB's

As the M3 screw is tightened the legs expand to securely lock the screw and assembled parts in place.

Part Number	Chassis Hole	Panel Thickness
04-SOR001	4mm	2.3 - 2.5mm

Material: Black Nylon 6/6 (UL)



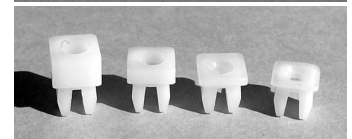
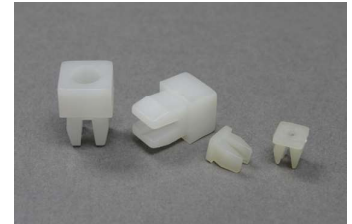
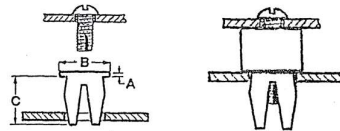
Square Head Spacer Grommet Nuts

Low cost, positive fastening of thin gauge materials and PCB's • Recommended for securing heavy PCB modules

As the M3 screw is tightened the legs expand to securely lock the screw and assembled parts in place.

Part Number	Hole Size mm	Panel Thickness	Screw Size	Head Size B	Head Height A	Length C
04-PSG135	4.4-4.5 sq	0.8-2.0	4	5.4	1.3	5.5
04-PSG635	4.4-4.5 sq	0.8-2.0	4	5.4	6.3	5.5
04-PSG001	7.0-7.4 sq	0.8-3.2	8-10	9.5	0.8	8.1
04-PSG002	7.0-7.4 sq	0.8-3.2	8-10	9.5	1.6	8.1
04-PSG003	7.0-7.4 sq	0.8-3.2	8-10	9.5	3.2	8.1
04-PSG004	7.0-7.4 sq	0.8-3.2	8-10	9.5	6.4	8.1
04-PSG150	7.87 sq	0.8-4.3	10	11.8	1.6	7.5
04-PSG190	8.5-8.7sq	1.6-4.3	10	11.8	2.4	10
04-PSG130	9.4-9.5sq	0.8-2.5	12	15.8	2.0	7.0

Material: Natural Nylon 6/6



PSG004, 003, 002 & 001

Closed Screw Spacer Grommet Nuts

Ideal for securing heavy PCB modules

All the advantages of the standard grommet nut, but the metal screw is encapsulated by the grommet, thus insulating it from electrical wiring and guards against moisture.

Part Number	Spacer Height A	Spacer Diameter B	Hole Size	Panel Thickness	Screw Size	Length C
04-PSGC0002	1.6	9.5	6.9-7.4 sq	0.5-3.5	8-10	13.9
04-PSGC0003*	3.2	9.5	6.9-7.4 sq	0.5-3.5	8-10	13.9
04-PSGC0004	6.3	9.5	6.9-7.4 sq	0.5-3.5	8-10	13.9

Material: Natural Nylon 6/6

* = Available in black

