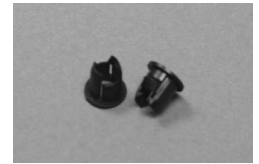
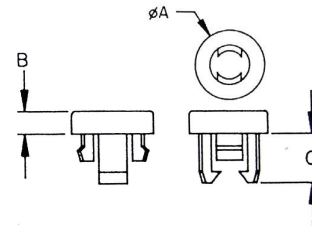


LED Panel Clip

One piece part for quick assembly • For use with standard 5mm LED's

Part Number	Hole Size mm	Max. Panel Thick. T	A mm	B mm	C mm
35-LEDH01	6.1 - 6.3	1.8	8.1	0.6	6.4
35-LEDH02	7.1 - 7.3	1.2	9.1	2.5	5.6
35-LED5-2	6.4	3.0	7.9	0.5	6.2

Material: Black Nylon 6/6



3 mm Holders for 90° Mounting

Some preferred stock types shown, other options available

35-LEK310

MOUNTING HOLES

35-LEK320

MOUNTING HOLES

35-LEK330

MOUNTING HOLES

35-LEK340

MOUNTING HOLES

5mm & Misc. Holders for 90° Mounting

Some preferred stock types shown, other options available

5mm
35-LED505

5mm 3 Lead
35-LEK503

MOUNTING HOLES

Photo TR Holder
35-PLT130T

Rectangular
35-LEK518

Light Pipes

For SMD applications - ESD protection • Refer to Page 68 for other light pipes

Vertical
VLP Series

Elevations
3.8 to 19mm

Horizontal
BSLP1

Round Face

Horizontal
BSLP2

Rectangular Face

Horizontal
BSLP3 Series

Variable Centreline