

## PCB Posts - Double End Types

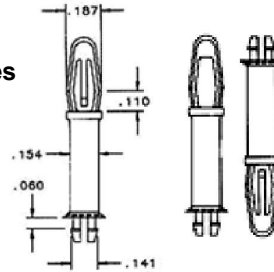
Ideal for small printed circuit boards or mounting on motherboards  
Uses same size holes at each end

### PML Series

Part Number	Spacing A 1.5mm PCB
05-PML08L	8

Material: Nylon 6/6

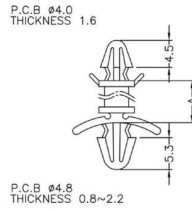
**PML Mounting Holes**  
PCB 4mm  
Panel 3mm



### MAF Series

Part Number	Spacing A
05-MAF10	10

Material: Nylon 6/6

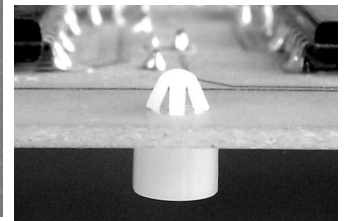
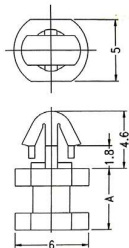


## PCB Spacer Support

### PDC Series

Part Number	Spacing A	PDC Series Mounting Holes 3.5mm Dia.
05-PDC030	3.0	
05-PDC040	4.0	
05-PDC045	4.5	
05-PDC050	5.0	
05-PDC055	5.5	
05-PDC060	6.0	

Material: Nylon 6/6

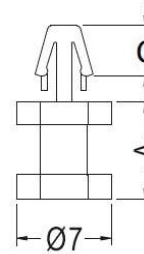


### DCB Series

Part Number	Spacing A	C	DCB Series Mounting Holes 3.0mm Dia.
05-DCB-9D	9.0	4.0	

Material: Nylon 6/6

P.C.B Ø3.0 THICKNESS: B

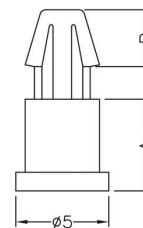


### DCC Series

Part Number	Spacing A	DCC Series Mounting Holes 3.0mm Dia.
05-DCC-3.5	3.5	

Material: Nylon 6/6

P.C.B Ø3.0 THICKNESS E



### KMC Series

Part Number	Spacing A	KMC Series Mounting Holes 4.0mm Dia.
05-KMC05	5.0	

Material: Nylon 6/6

P.C.B Ø4.0 THICKNESS B

